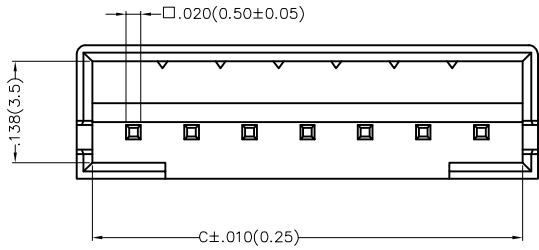


1 2 3 4 5 6 7 8

REV	LOCATIONS	DESCRIPTION	DATE	REVISER	APPD
1	▲	Size changes	26/APR/21	KATE	JOHNNY
2	▲	1: Add Point location description 2: Update UL flame class	08/AUG/24	MATT	LEO

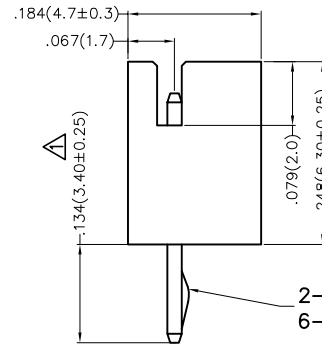
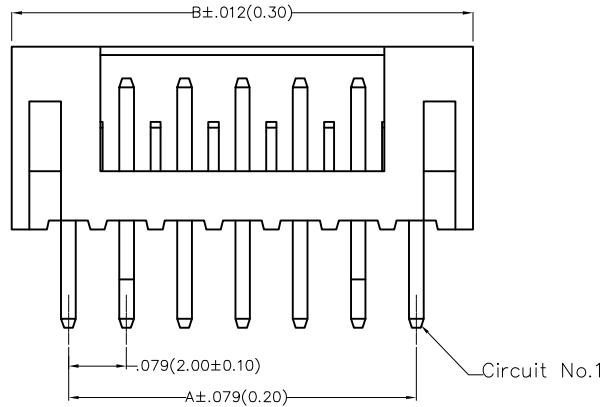


Electrical

Current Rating: 2.0A AC(rms)/DC
 Voltage Rating: 100V AC(rms)/DC
 Contact Resistance: 10 mΩ Max
 Insulation Resistance: 1000 MΩ MIN
 Withstanding Voltage: 800V AC r.m.s
 Temperature Range—Operating: -25°C~+85°C

Material and Plating

Housing: PA66 (UL 94V-0) ▲
 Contact Pin: Brass
 Plating: Tin Plated

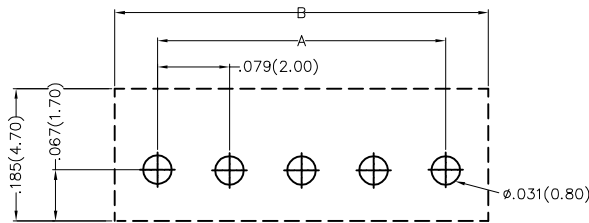


▲
 2-5Circuits "K" marking position is the first pin on both sides
 6-16Circuits "K" marking position is the second pin on both sides

Ordering Information

FWF 200 01 - S XX S 2 2 W1 B
 1 2 3 4 5 6 7 8 9 10

1 Category FWF—Wafer	2 Series Number 200—Pitch2.0mm	3 Distinction No. 01	4 Row Option S—Single Row	5 Circuits XX	6 Entry Angle S—180° Vertical
7 Plating 2—Tin Plated	8 Material—Resin 2—PA66	9 Color—Resin W1—White	10 Packaging B—PE Bag		



Recommended P.C.Board Layout

THIRD ANGLE PROJECTION	GENERAL TOLERANCES (UNLESS SPECIFIED)		APPROVE BY FRANK	DATE 18/JUN/13	PART NO. FWF20001-SXXS22W1B	ITEM NO. FWF20001	 Building Technology Cornerstone
	DESIGN UNITS Inch (metric)	X.±.012(0.30) X.X±.008(0.20) X.XX±.006(0.15) X.XXX±.004(0.10)	X:±5' .X:±2' .XX:±1' .XXX:±0.5'	CHECKED BY JACOB	DATE 18/JUN/13	TITLE Wire to Board (Wafer) Pitch 2.0mm 180° Vertical (DIP)	
SCALE 5:1	SIZE A4	DRAWN BY CHERRY		DATE 18/JUN/13	THIS DRAWING CONTAINS INFORMATION THAT IS PROPRIETARY TO TXGA INDUSTRIAL ELECTRONICS(S.Z)CO.,LTD AND SHOULD NOT BE USED WITHOUT WRITTEN PERMISSION		

1 2 3 4 5 6 7 8

1 | 2 | 3 | 4 | 5 | 6 | 7 | 8

REV	LOCATIONS	DESCRIPTION	DATE	REVISER	APPD

A

A

B

B

C

C

D

D

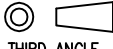

E

E

F

F

Circuits (n)	Part No.	Dimensions(in/mm)		
		A	B Δ	C
2	FWF20001-S02S22W1B	.079(2.00)	.240(6.10)	.197(5.00)
3	FWF20001-S03S22W1B	.157(4.00)	.319(8.10)	.157(7.00)
4	FWF20001-S04S22W1B	.236(6.00)	.398(10.10)	.354(9.00)
5	FWF20001-S05S22W1B	.315(8.00)	.476(12.10)	.433(11.00)
6	FWF20001-S06S22W1B	.394(10.00)	.555(14.10)	.512(13.00)
7	FWF20001-S07S22W1B	.472(12.00)	.634(16.10)	.591(15.00)
8	FWF20001-S08S22W1B	.551(14.00)	.713(18.10)	.670(17.00)
9	FWF20001-S09S22W1B	.630(16.00)	.791(20.10)	.748(19.00)
10	FWF20001-S10S22W1B	.709(18.00)	.870(22.10)	.827(21.00)
11	FWF20001-S11S22W1B	.787(20.00)	.949(24.10)	.906(23.00)
12	FWF20001-S12S22W1B	.866(22.00)	1.028(26.10)	.984(25.00)
13	FWF20001-S13S22W1B	.945(24.00)	1.106(28.10)	1.063(27.00)
14	FWF20001-S14S22W1B	1.024(26.00)	1.185(30.10)	1.142(29.00)
15	FWF20001-S15S22W1B	1.102(28.00)	1.264(32.10)	1.220(31.00)
16	FWF20001-S16S22W1B	1.181(30.00)	1.343(34.10)	1.299(33.00)

 THIRD ANGLE PROJECTION	GENERAL TOLERANCES (UNLESS SPECIFIED)		APPROVE BY FRANK	DATE 18/JUN/13	PART NO. FWF20001-SXXS22W1B	ITEM NO. FWF20001	 Building Technology Cornerstone	
	X.±.012(0.30)	X'.±5'	CHECKED BY JACOB	DATE 18/JUN/13	TITLE Wire to Board (Wafer) Pitch 2.0mm 180° Vertical (DIP)			REV 2
	DESIGN UNITS Inch (metric)	X.XX±.008(0.20)	.X'±2'	DRAWN BY CHERRY	DATE 18/JUN/13	THIS DRAWING CONTAINS INFORMATION THAT IS PROPRIETARY TO TXGA INDUSTRIAL ELECTRONICS(S.Z)CO.,LTD AND SHOULD NOT BE USED WITHOUT WRITTEN PERMISSION		
	SCALE 5:1	SIZE A4	X.XXX±.004(0.10)	.XXX'±0.5'				

1 | 2 | 3 | 4 | 5 | 6 | 7 | 8